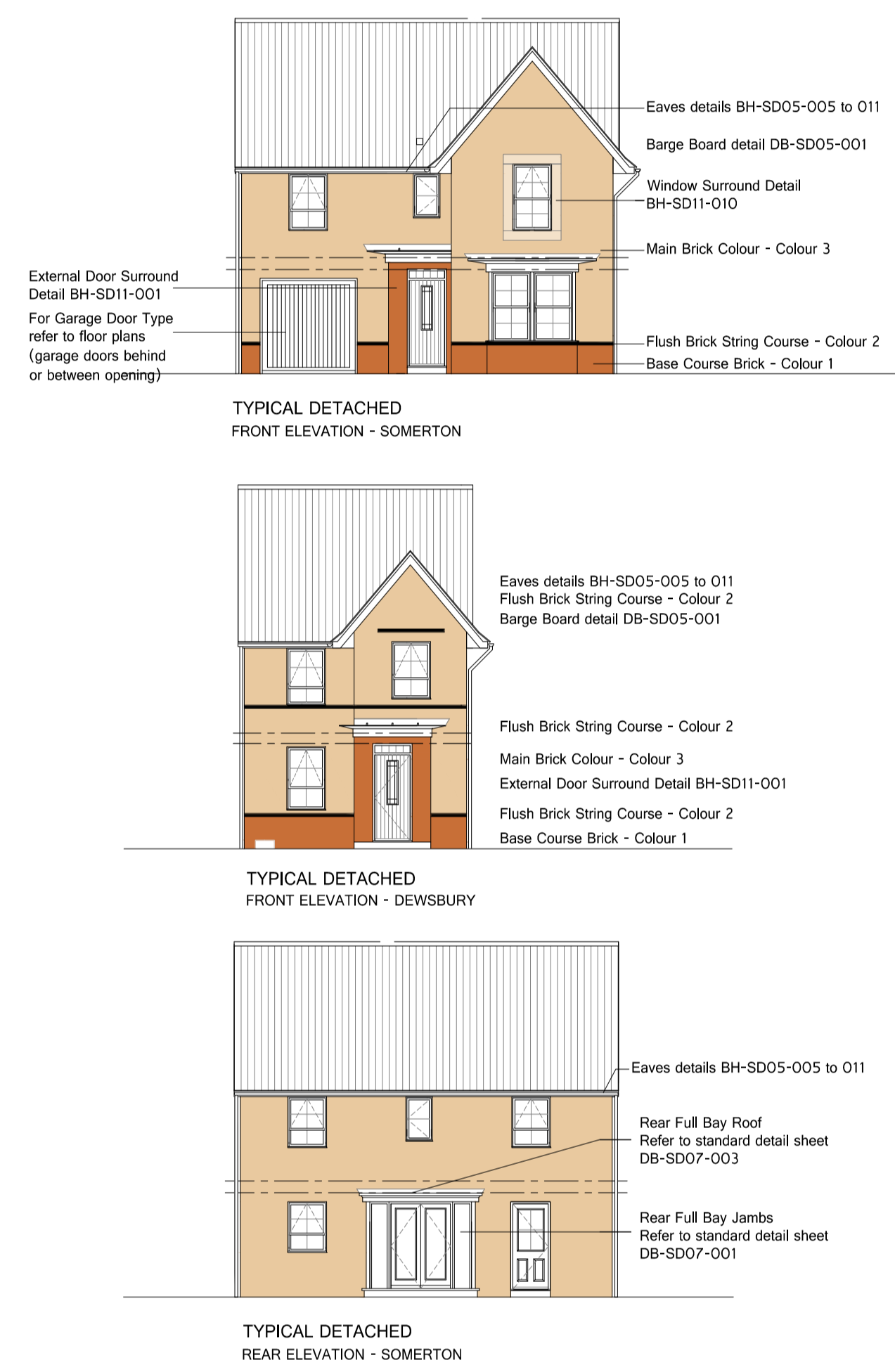


BARRATT HOMES MATERIALS SCHEDULE

- A** Main Brick - Wienerberger Dorton Manor Stock
Detail Brick - Wienerberger Staffordshire blue smooth
Plinth Brick - Wienerberger Durham Claret
 - B** Main Brick - Wienerberger Durham Claret
Detail Brick - Wienerberger Staffordshire blue smooth
Plinth Brick - Wienerberger Gainsborough multi
 - C** Main Brick - Wienerberger Durham Red Multi
Detail Brick - Wienerberger Staffordshire blue smooth
Plinth Brick - Wienerberger Ashington Red Multi
 - D** Main Brick - Wienerberger Ashington Red Multi
Detail Brick - Wienerberger Staffordshire blue smooth
Plinth Brick - Wienerberger Ashington Red Multi
 - E** Main Brick - Wienerberger Durham Claret
Detail Brick - Wienerberger Staffordshire blue smooth
Plinth Brick - Wienerberger Ashington Red Multi
 - F** Main Facing - Weber monocouche render - White
Detail Brick - Wienerberger Staffordshire blue smooth
Plinth Brick - As adjoining property
- Rendered panels location - Weber monocouche render - White.
See illustrations below for clarification

- A** Russell Grampian Slate Grey
 - B** Russell Grampian Cottage Red
 - C** Russell Grampian Peat Brown
- Generally
- Soffits & Fascias - White uPVC
Screen Walls - To match adjoining properties
Windows - White uPVC
External Doors, Garages - Steel, Pre-finished White
Rainwater Goods - Black Half-round gutters with round fallpipes
- SURFACE FINISHES**
- T** Hot rolled asphalt
 - Hot rolled asphalt red chipping's
 - Burnt ochre block paving

BARRATT HOMES ELEVATION MATERIAL GUIDE



BARRATT HOMES RENDERED IDENTIFICATION

Colour shown for rendered area identification only



TAYLOR WIMPEY MATERIALS AND COLOUR SCHEDULE

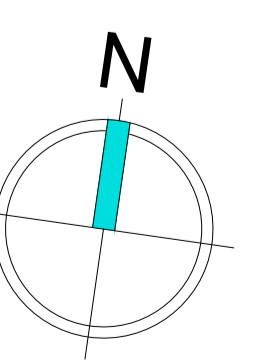
CODE	MAIN BRICK
1	WIENERBERGER DORTON MANOR STOCK
2	WIENERBERGER GAINSBROUGH MULTI
R	PAREX MONOCOUCHE RENDER - IVORY

CODE	ROOF TILE
A	RUSSELL CEMEX GRAMPIAN SLATE GRAY
B	RUSSELL CEMEX PENINE RUSTIC PEAT

ARTSTONE	AMBER PRECAST BATHSTONE
----------	-------------------------

GENERAL NOTES

- ALL JOINERY TO BE WHITE
- ALL RAINWATER GOODS TO BE BLACK SQUARE PVCU
- FRONT ENTRANCE DOORS TO BE BLACK
- GARAGE DOOR COLOURS TO BE BLACK



Revision notes:

Rev:	Date:	Notes:
A	15.09.15	Updated to latest planning layout
B	19.09.15	Clarification to plots 69, 70 & 117. Material selection for plots 38, 39, 99, 110, 69 & 70
C	22.09.15	Updated to latest planning layout

STEN Architecture Ltd
Suite 10, Unit 3,
Barnett Office Park,
Bennett Avenue,
Horbury,
Wakefield,
WF4 5RA
Telephone: 01924 669424

Web: www.sten-architecture.co.uk
Twitter: @STEN_arch
Facebook: stenarchitecture
LinkedIn: Sten Architecture



Drawing number:
1446-033

Client:
Barratt Homes
North East

Project:
Morton

Drawing Title:
Combined Materials Layout

Date:
March 15

Scale @A0:
NTS

Revision:
C